

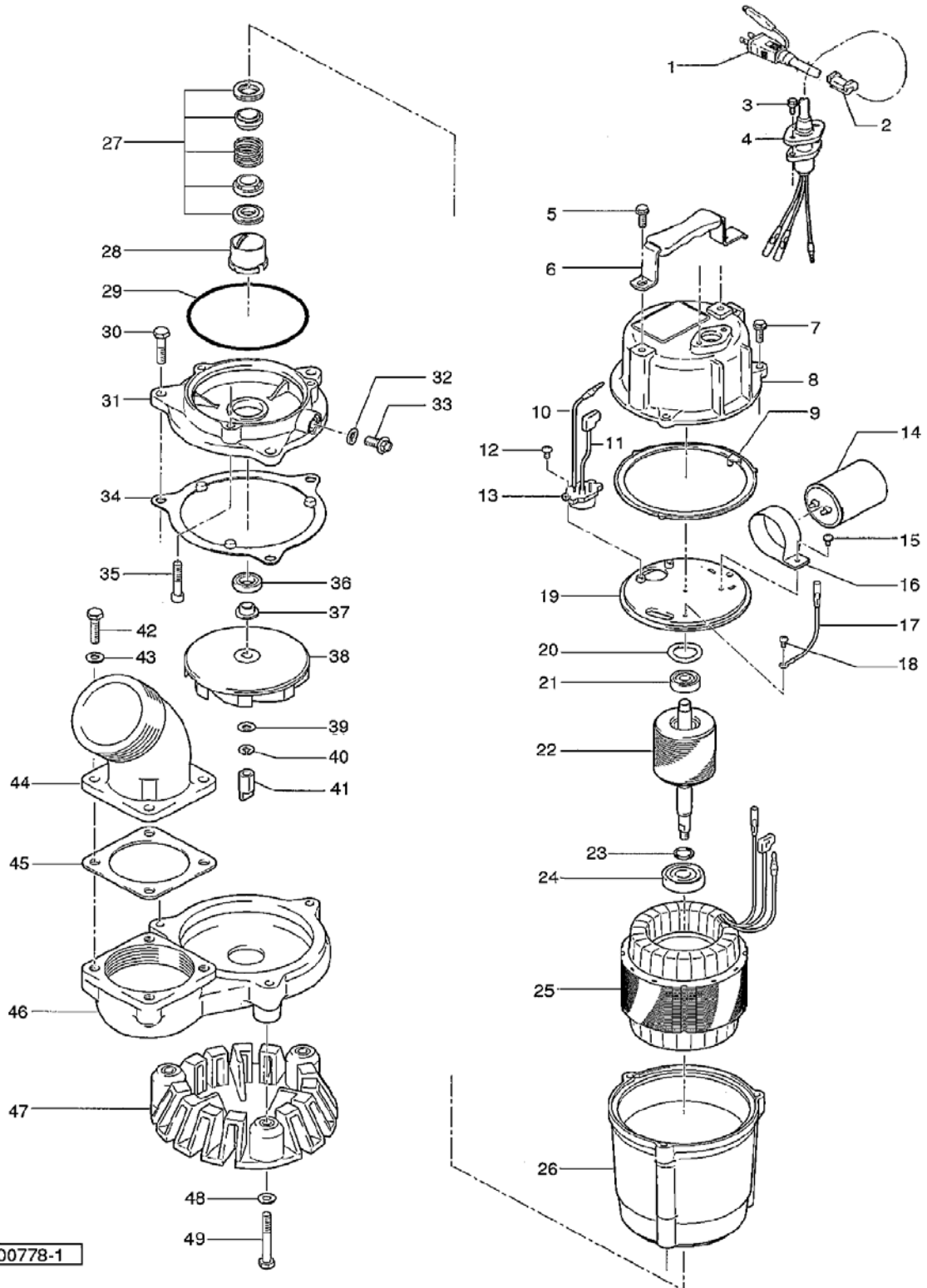
PARTS LIST		DEWATERING PUMP					1/5/2018
ITEM	PART No.	DESCRIPTION	QTY	SIZE	MATERIAL	NOTES	
1	001-471-12	Cabtyre Cable Set (32')115V-60Hz(USA)	1	VCT3Cx2mm2	LB		
	001-443-31	Cabtyre Cable Set (32')230V-60Hz(USA)	1	VCT3Cx2mm2	LB		
2	010-134-18	Cable Clip Rubber	1	HS3-4	NBR		
3	140-427-17	Hex.Bolt (w/Plain Washer)	2	M5x15	SUS304		
4	003-190-10	Gland	1		SUS316		
5	140-032-37	Hex.Bolt	2	M6x15	SWRM		
6	068-272-18	Handle	1	HS2.4(S)-50/60	SPC+NR		
7	140-396-16	Hex.Bolt (w/Plain Washer)	3	M6x20	SUS304		
8	051-000-51	Motor Head Cover	1	BLUE	ADC		
9	121-001-45	Packing	1	HS-750W	NBR	*	
10	009-001-03	Intermediate Lead Wire	1Set	AWG16x160(red)			
11	009-001-42	Intermediate Lead Wire	1Set	AWG16x80(Indigo)			
12	143-000-43	Truss Screw	2	M4x8	SWRM		
13	053-001-33	Motor Protector 115V-60Hz(USA)	1	KA142-BBBL21F	(T.C)		
	053-001-97	Motor Protector 230V-60Hz(USA)	1	KA142-LPZL24F	(T.C)		
14	076-000-43	Capacitor 115V-60Hz(USA)	1	250VAC-70MF			
	076-000-44	Capacitor 230V-60Hz(USA)	1	450VAC-21MF			
15	143-085-21	Pan Screw (w/Spring Washer)	1	M4x6	SWRM	interchangeable with 143-086-22	
16	127-000-46	Capacitor Fixing Plate	1	d51	SPC	interchangeable with 127-000-99	
17	009-001-02	Earth Terminal	1Set	UL1015- AWG18,G/Y,L=160			
18	143-203-14	Pan Screw (w/Spring Washer)	1	M4x5	C360		
19	050-001-12	Motor Bracket	1		ADC		
20	142-192-16	Wave Washer	1	6201(D=32,t=0.4)	SK5		
21	052-100-15	Bearing	1	6201ZZC3			
22	055-002-89	Rotor	1Set	w/Bearing			
23	061-180-17	Bearing Collar	1	d15.1xd20x1.6t	SS		
24	052-152-12	Bearing	1	6302ZZC3			
25	056-008-14	Stator 115V-60Hz(USA)	1Set				
	056-008-15	Stator 230V-60Hz(USA)	1Set	d51			
26	064-001-24	Motor Frame	1	BLUE	ADC		
27	025-291-10	Mechanical Seal	1	W-14VL	SSiC		
28	030-000-09	Oil Lifter	1	W-14VL	Resin		
29	122-133-17	O-Ring	1	G-110(109.4xd3.1)	NBR	*	
30	140-056-37	Hex.Bolt	3	M8x30	SWRM		
31	029-000-74	Oil Casing	1	HS3.75S/HS2.75S	FCD		
32	121-246-11	Packing	1	d10.3xd16x2t	PE	*	
33	035-124-12	Oil Plug	1	M10x15	SUS304		
34	121-000-74	Packing	1	HS3.75S/HS2.75S	NR	*	

PARTS LIST		DEWATERING PUMP				1/5/2018
ITEM	PART No.	DESCRIPTION	QTY	SIZE	MATERIAL	NOTES
35	140-256-26	Hex.Socket Cap Bolt	3	M6x35	SCM	
36	122-441-11	V-Ring	1	VR-14	NBR	
37	071-292-14	Shaft Sleeve	1	LB3-250/480	SUS304	
38	021-007-55	Impeller (60Hz)	1	HS2.75S-62	Urethane Rubber	
39	142-127-10	Plain Washer	1	M8	SUS304	
40	142-163-18	Spring Washer	1	M8	SUS304	
41	024-174-13	Agitator	1	HS2.4(S)(M8)	Sintered Alloy	
42	140-076-33	Hex.Bolt	4	M10x30	SWRM	
43	142-128-24	Plain Washer	4	M10	SPC	
44	032-000-34	Hose Coupling 3" angled	1	NPT-3(45) KT-15	FC	
	032-000-35	Hose Coupling 2" angled OPTION	1	NPT-3(45) KT-15	FC	OPTION
	032-158-16	Hose Coupling 2" straight OPTION	1	NPT 2" (STRAIGHT) KT-15	FC	OPTION
	032-160-11	Hose Coupling 3" straight OPTION	1	NPT 3" (STRAIGHT) KT-15	FC	OPTION
45	121-181-17	Packing	1	KT-15	NBR	*
46	020-001-57	Pump Casing	1	HS3.75S/HS2.75S	FCD	
47	023-000-77	Strainer Stand	1	HS3.75S	PVC	
48	142-127-23	Plain Washer	3	M8	SPC	
49	140-057-38	Hex.Bolt	3	M8x35	SWRM	
	173-003-27	<b>Packing O-Ring Set</b>	1Set	(Marked by *)		
9	121-001-45	Packing (Head Cover/M.Frame)	1	HS-750W	NBR	*
29	122-133-17	O-Ring (M.Frame/O.Casing)	1	G-110(109.4xd3.1)	NBR	*
32	121-246-11	Packing (Oil Plug)	1	d10.3xd16x2t	PE	*
34	121-000-74	Packing (O.Casing/P.Casing)	1	HS3.75S/HS2.75S	NR	*
45	121-181-17	Packing (Hose Coupling)	1	KT-15	NBR	*
		Lubricant				

PARTS LIST		DEWATERING PUMP				1/5/2018
ITEM	PART No.	DESCRIPTION	QTY	SIZE	MATERIAL	NOTES

## EXPLODED VIEW

HS3.75S-62



C-00778-1